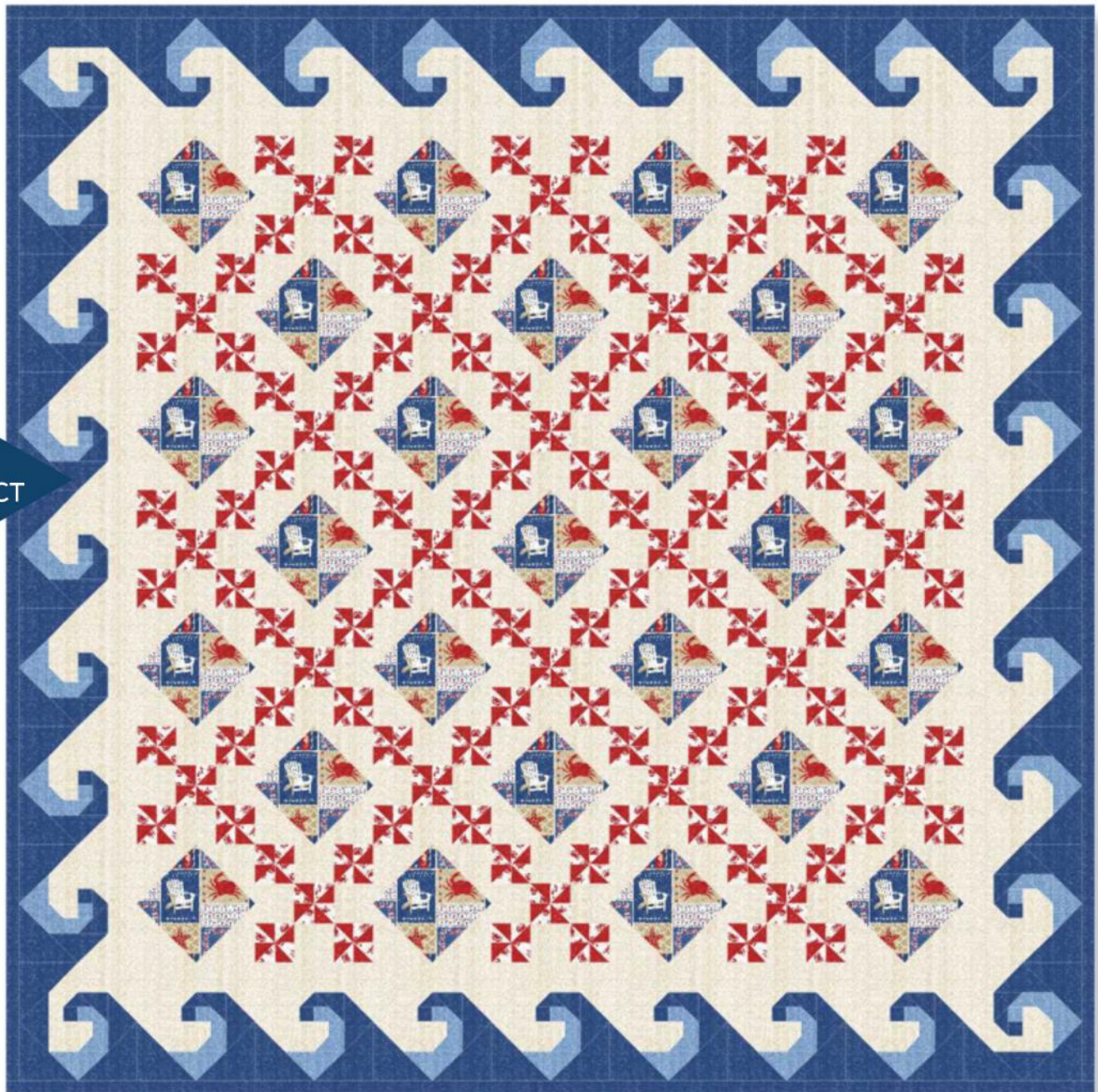


Crab Walk

Designed by Natalie Crabtree
Featuring Shoreline by Whistler Studios
SIZE: 82" x 82"









FREE
PROJECT

THIS IS A DIGITAL REPRESENTATION OF THE QUILT TOP, FABRIC MAY VARY.

PLEASE NOTE: BEFORE MAKING YOUR PROJECT, CHECK FOR ANY PATTERN UPDATES AT WINDHAMFABRICS.COM'S FREE PROJECTS SECTION.



Crab Walk

KEY	FABRIC	SKU	YD	CUTTING INSTRUCTIONS
A		50116-5 Cream	3 3/4	<p>Cut (12) 5 3/8" strips WOF; subcut into (80) 5 3/8" squares. Cut squares diagonally to make 160 triangles. (Will be used in Wave Blocks, and Square in Square Blocks).</p> <p>Cut (3) 5 3/4" strips WOF; subcut (15) 5 3/4" squares. Cut across the square diagonally from corner to corner twice to create 4 triangles. (Yields 60 triangles).</p> <p>Cut (3) 3 1/8" strips WOF; subcut (32) 3 1/8" squares. Cut across once diagonally from corner to corner to create 2 triangles. (Yields 64 triangles).</p> <p>Cut (10) 3 1/2" strips WOF; subcut (112) 3 1/2" squares. Use 16 squares to cut across the square diagonally from corner to corner twice to create 4 triangles. (Yields 64 triangles). Remaining (96) squares stay intact.</p> <p>Cut (3) 1 5/8" strips WOF; subcut (64) 1 5/8" squares.</p>
B		50110-X Multi	1	Cut (5) 6 7/8" strips WOF; subcut into (25) 6 7/8" squares.
C		50116-2 Red	1 1/4	Cut (15) 2 1/2" strips WOF; subcut into (240) 2 1/2" squares.
D		50114-2 Red	1 1/4	Cut (15) 2 1/2" strips WOF; subcut into (240) 2 1/2" squares.
E		50116-1 Blue	2 1/4	<p>Cut (5) 5 3/8" strips WOF; subcut into (34) 5 3/8" squares. Cut across once diagonally from corner to corner to create 2 triangles. (Yields 68 triangles)</p> <p>Cut (2) 5 3/4" strips WOF; subcut into (9) 5 3/4" squares. Cut across the square diagonally from corner to corner to create 4 triangles. (Yields 36 triangles)</p> <p>Cut (2) 3 1/8" strips WOF; subcut into (16) 3 1/8 x 3 1/8" squares. Cut across the square once diagonally from corner to corner to create 2 triangles. (Yields 32 triangles)</p> <p>Cut (1) 3 1/2" strips WOF; subcut into (8) 3 1/2" squares. Cut across the square diagonally from corner to corner to create 4 triangles. (Yields 32 triangles)</p> <p>Cut (2) 1 5/8" strip WOF; subcut into (32) 1 5/8" squares.</p> <p>Cut (9) 2 1/2" strips for binding.</p>
F		50116-3 Light Blue	1	<p>Cut (2) 5 3/4" strips WOF; subcut into (8) 5 3/4" squares. Cut across the square diagonally from corner to corner to create 4 triangles. (Yields 32 triangles)</p> <p>Cut (2) 3 1/8" strips WOF; subcut into (16) 3 1/8" inch squares. Cut across the square once diagonally from corner to corner to create 2 triangles. (Yields 32 triangles)</p> <p>Cut (1) 3 1/2" strips WOF; subcut into (8) 3 1/2" squares. Cut across the square diagonally from corner to corner to create 4 triangles. (Yields 32 triangles)</p> <p>Cut (2) 1 5/8" strip WOF; subcut into (32) 1 5/8" squares.</p>
		Backing	7 1/2	90" x 90" piece of batting.



Crab Walk

Piecing Instructions

Nine Patch Pinwheel block assembly:

1. Using (1) 2 ½ inch square of both Fabrics **C** and **D**, place squares right sides together. Draw a line diagonally from one corner to the opposite corner. Sew a ¼ inch around the line on both sides. Use your rotary cutter to detach both HST by cutting on the drawn line. This piecing method should yield 2 HST, half of 1 pinwheel. Press seams towards the red fabric. Repeat to make 480 HST units.
2. Square down HST using your favorite ruler to 2 inches.
3. Sew the HST pieces together to create pinwheels as shown below in the diagram. Pinwheels should measure 3 ½ inches (3 inches finished). Press seams open to reduce bulk. Repeat to make 120 Pinwheels.
4. Use 3 ½ inch Fabric **A** squares to create your nine-patch block. Lay out blocks as pictured below. Press seams towards the Fabric **A** squares to nestle seams and reduce bulk. Create a total of 24 nine patch pinwheel blocks.



Square in a Square block assembly:

1. Using the Fabric **B** 6 7/8 inch squares and Fabric **A** 5 3/8 triangles, align the long edge of the triangle to the sides of the square sewing a ¼ seam. Do the same on the opposite side of the square with a Fabric **A** triangle.
2. Repeat to sew a triangle onto all 4 sides of the Fabric **B** square. Press seam allowances away from the center square.
3. Trim Dog Ears and square the block to 9 ½ inches. Repeat to make 25 square in a square blocks.





Crab Walk

Wave Block assembly:

Designer Note: Wave blocks located in the four corners of the quilt have a slightly different assembly. See last step in Wave Block assembly instructions for modifications)

1. Start with (2) Fabric **A** 1 5/8 squares, (1) Fabric **E** 1 5/8 inch square and (1) Fabric **F** 1 5/8 square. Sew together in a four patch formation making sure that both Fabric **A** squares are together, Fabric **E** is at the top left side of the four patch and Fabric **F** is at the top right side of four patch.
2. Continue your wave block by sewing a Fabric **E** 3 1/2 inch triangle to the top of the four patch so that the dark blue fabric will be going clock wise. Sew a Fabric **A** 3 1/2 inch triangle to the bottom of the four patch. Sew a Fabric **F** 3 1/2 inch triangle to the right side of the four patch so that the light blue fabric will be going clock wise. Sew an additional Fabric **A** 3 1/2 inch triangle to the remaining left side. Trim dog ears.
3. Sew (2) 3 1/8 triangles from Fabric **A**, and (1) 3 1/8 triangle from Fabrics **F** and **E** to the block to continue the wave pattern. Fabrics will move in a clock wise formation with fabrics continuing to the right. See diagram to check fabric placement.
4. Sew (2) 5 3/4 triangles from Fabric **A**, (1) 5 3/4 triangle from Fabrics **F** and **E** to the block to continue the wave pattern. Fabrics will continue to move in a clock wise formation with fabrics continuing to the right. See diagram for fabric placement.
5. Sew (2) 5 3/8 triangles from Fabrics **A** and **E** to the block to continue wave pattern. Fabrics will continue in a clock wise pattern with both Fabric **E** triangles on one side of the block, and both Fabric **A** triangles on the opposite side.
6. Square to 9 1/2 inches. Repeat to make 28 blocks. (Quilt corner block instructions below).

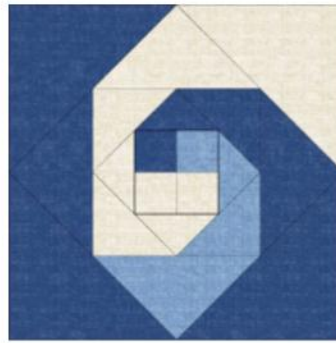




Crab Walk

Quilt Corner Wave Block Assembly:

1. Repeat Wave block Steps 1-3 from page 3.
2. Sew (2) Fabric **E** $5 \frac{3}{4}$ triangles on opposite sides, following the clock wise formation as shown below. Sew (1) Fabric **A** and (1) Fabric **F** $5 \frac{3}{4}$ triangle to opposite sides following the clock wise formation as shown below.
3. Sew (1) Fabric **A** $5 \frac{3}{8}$ triangle and (3) Fabric **E** $5 \frac{3}{8}$ triangles to block in a clock wise formation to create the corner blocks. 3 corners will use Fabric **E**, with only one corner using Fabric **A**. The Fabric **A** triangle will point towards the center of the quilt. See diagram below for fabric placement.



Quilt Assembly

1. Sew together rows 1-9 according to the diagram below. Rows 1 and 9 will consist of only Wave blocks. Rows 2-8 will start and finish with a wave block, using alternating square in square blocks and nine patch blocks within the row.
2. Sew together rows in the order shown below to complete the quilt top.



Crab Walk

